



Physical Property Measurement System

Resistivity Option User's Manual

Part Number 1076-100A

Quantum Design

11578 Sorrento Valley Rd.
San Diego, CA 92121-1311
USA

Technical support (858) 481-4400
 (800) 289-6996
 Fax (858) 481-7410

Second edition of manual completed August 1999.

Trademarks

All product and company names appearing in this manual are trademarks or registered trademarks of their respective holders.

U.S. Patents

4,791,788 Method for Obtaining Improved Temperature Regulation When Using Liquid Helium Cooling
4,848,093 Apparatus and Method for Regulating Temperature in a Cryogenic Test Chamber
5,311,125 Magnetic Property Characterization System Employing a Single Sensing Coil Arrangement to Measure AC Susceptibility and DC Moment of a Sample (patent licensed from Lakeshore)
5,647,228 Apparatus and Method for Regulating Temperature in Cryogenic Test Chamber
5,798,641 Torque Magnetometer Utilizing Integrated Piezoresistive Levers

Foreign Patents

U.K. 9713380.5 Apparatus and Method for Regulating Temperature in Cryogenic Test Chamber

C O N T E N T S

Table of Contents

PREFACE

Contents and Conventions	vii
P.1 Introduction	vii
P.2 Scope of the Manual.....	vii
P.3 Contents of the Manual	vii
P.4 Conventions in the Manual.....	viii

CHAPTER 1

Introduction to the Resistivity Option	1-1
1.1 Introduction	1-1
1.2 Overview of the Resistivity Option	1-1
1.2.1 Advantage of Four-Wire Resistance Measurements	1-2
1.3 Resistivity Option Software.....	1-2
1.3.1 Activating the Resistivity Software	1-2
1.3.2 Resistivity Control Center	1-3

CHAPTER 2

User Bridge Board Operation	2-1
2.1 Introduction	2-1
2.2 Function of the User Bridge Board.....	2-1
2.2.1 Limits and Resolution.....	2-3
2.2.2 Internal Excitation Current Range Selection	2-4
2.2.3 Calibration Modes	2-4
2.2.3.1 Fast Mode	2-4
2.2.3.2 Standard Mode.....	2-5
2.2.3.3 High-Resolution Mode	2-5
2.2.4 Drive Modes	2-6
2.2.5 Internal Voltage Gain Control	2-7
2.2.6 A/D Converter Calibration	2-7
2.3 Changing User Bridge Board Settings.....	2-8
2.3.1 Using the Bridge Channels Dialog Box to Change Bridge Settings.....	2-9
2.3.2 Using the Bridge Configuration Tab to Change Bridge Settings	2-10
2.3.3 Using the Model 6000 to Change Bridge Settings	2-11
2.4 Description of User Bridge Board Operation	2-11

CHAPTER 3

Four-Wire Resistance Measurements	3-1
3.1 Introduction	3-1
3.2 Sample-Mounting Procedures	3-1
3.3 Taking Four-Wire Resistance Measurements	3-2
3.3.1 Taking Single-Point Resistance Measurements	3-3
3.3.1.1 Taking Measurements in Immediate Mode	3-3
3.3.1.2 Taking Measurements in Sequence Mode	3-4
3.3.2 Taking Multiple Resistance Measurements	3-6
3.3.2.1 Taking Measurements in Immediate Mode	3-6
3.3.2.2 Taking Measurements in Sequence Mode	3-7
3.4 Resistivity Data Files	3-9
3.4.1 Creating a Resistivity Data File	3-9
3.4.2 Selecting a Resistivity Data File	3-10
3.4.3 Adding a Comment to a Resistivity Data File	3-11
3.4.4 Changing Resistivity Data Files during a Sequence Run	3-11

CHAPTER 4

Operation with the Helium-3 System	4-1
4.1 Introduction	4-1
4.2 Overview of Resistivity Operation with the Helium-3 System	4-1
4.3 Resistivity Measurements with the Helium-3 System	4-2
4.3.1 Measurement Setup	4-2
4.3.1.1 Prepare for the Measurement	4-2
4.3.1.2 Install the Sample	4-3
4.3.1.3 Start Up the Software	4-3
4.3.2 Performing Measurements	4-4
4.3.2.1 Reserved Channel 3	4-4
4.3.2.2 Excitation Levels	4-4
4.3.2.3 Unused Bridge Channels	4-4

CHAPTER 5

Operation with the Horizontal Rotator	5-1
5.1 Introduction	5-1
5.2 Overview of Resistivity Operation with the Horizontal Rotator	5-1
5.3 Resistivity Measurements with the Horizontal Rotator	5-2
5.3.1 Measurement Setup	5-2
5.3.1.1 Prepare for the Measurement	5-2
5.3.1.2 Install the Sample	5-2
5.3.1.3 Start Up the Software	5-3
5.3.1.4 Configure the Rotator	5-3
5.3.2 Performing Measurements	5-3
5.3.3 Turning Off UserTemp	5-3

APPENDIX A

Installation	A-1
A.1 Introduction	A-1
A.2 Installing the User Bridge Board	A-1
A.2.1 Remove the Model 6000 Cover	A-1
A.2.2 Install the User Bridge Board	A-2
References	References-1
Index	Index-1

Figures

Figure 1-1. Interface on Resistivity Sample Puck	1-1
Figure 1-2. Example of Four-Wire Resistance Measurement.	1-2
Figure 1-3. Option Manager Dialog Box.....	1-2
Figure 1-4. Resistivity Control Center	1-3
Figure 2-1. Block Diagram of Bridge Board.....	2-3
Figure 2-2. Number of Measurements Averaged in High-Resolution Mode	2-6
Figure 2-3. Bridge Channels Dialog Box	2-9
Figure 2-4. Bridge Configuration Tab in Resistivity Dialog Box	2-10
Figure 2-5. Allowed Measurement Parameters V and I.	2-12
Figure 3-1. Resistivity Sample Puck with Three Samples.....	3-1
Figure 3-2. Resistivity Control Center	3-2
Figure 3-3. Resistivity Quick Measure Dialog Box	3-3
Figure 3-4. Bridge Configuration Tab in Resistivity Dialog Box	3-4
Figure 3-5. Data Fields Tab in Resistivity Dialog Box	3-5
Figure 3-6. Scan Excitation Quick Measure Dialog Box	3-6
Figure 3-7. Scan Setup Tab in Scan Excitation Dialog Box.....	3-7
Figure 3-8. File and Sample Properties Dialog Box.....	3-10
Figure 3-9. Datafile Comment Dialog Box for Immediate Mode	3-11
Figure 4-1. User Bridge Cable.....	4-2
Figure 4-2. Helium-3 Sample Puck with Two Samples.	4-3
Figure 5-1. Resistance Bridge Sample Holder Board with Two Samples.....	5-2
Figure A-1. Model 6000 PPMS Controller with Cover Removed	A-3

Tables

Table 2-1. Sample Connections with User Bridge Cable Connected	2-2
Table 2-2. Current, Power, and Voltage Limits.....	2-3
Table 2-3. Current Ranges.....	2-4
Table 2-4. Function and Suggested Use of Calibration Modes	2-4
Table 2-5. Voltage Gain Settings	2-7
Table 2-6. User Bridge Board Parameters.....	2-8

Contents and Conventions

P.1 Introduction

This preface contains the following information:

- Section P.2 discusses the overall scope of the manual.
- Section P.3 briefly summarizes the contents of the manual.
- Section P.4 illustrates and describes conventions that appear in the manual.




P.2 Scope of the Manual

This manual discusses the operation of the PPMS Resistivity option hardware and software and explains how to take four-wire resistance measurements. This manual also explains how to use the Resistivity option with the PPMS Helium-3 Refrigerator System and the PPMS Horizontal Rotator.

P.3 Contents of the Manual

- Chapter 1 introduces the Resistivity option and discusses the option software.
- Chapter 2 discusses the functionality of the user bridge board and explains how to operate the user bridge board.
- Chapter 3 explains how to take four-wire resistance measurements.
- Chapter 4 explains how to operate the Resistivity option with the Helium-3 Refrigerator System option.
- Chapter 5 explains how to operate the Resistivity option with the Horizontal Rotator option.
- Appendix A explains how to install the user bridge board in the Model 6000 PPMS Controller.

P.4 Conventions in the Manual

File menu	Bold text distinguishes the names of menus, options, buttons, and panels appearing on the PC monitor or on the Model 6000 PPMS Controller LCD screen.
File>Open	The > symbol indicates that you select multiple, nested software options.
STATUS	Bold text and all capital letters distinguish the names of keys located on the front panel of the Model 6000 PPMS Controller.
<code>.dat</code>	The Courier font distinguishes characters you enter from the PC keyboard or from the Model 6000 PPMS Controller front panel. The Courier font also distinguishes code and the names of files and directories.
<Enter>	Angle brackets distinguish the names of keys located on the PC keyboard.
<Alt+Enter>	A plus sign connecting the names of two or more keys distinguishes keys you press simultaneously.
	A pointing hand introduces a supplementary note.
	An exclamation point inside an inverted triangle introduces a cautionary note.
	A lightning bolt inside an inverted triangle introduces a warning.

Introduction to the Resistivity Option

1.1 Introduction

This chapter contains the following information:

- Section 1.2 presents an overview of the PPMS Resistivity option.
- Section 1.3 discusses the Resistivity option software.

1.2 Overview of the Resistivity Option

The Resistivity option for the Physical Property Measurement System (PPMS) adds a configurable resistance bridge board, called the user bridge board, to the Model 6000 PPMS Controller. None of the four channels on the user bridge board are dedicated to a specific system operation, so all four channels are available to perform four-wire resistance measurements on the PPMS. The Resistivity option can report resistance as well as resistivity, conductance, and conductivity.

Samples for four-wire resistance measurements may be mounted on standard PPMS sample pucks (see figure 1-2) or on Resistivity sample pucks, which are included with the Resistivity option. Resistivity sample pucks have four contacts—one positive and one negative contact for current and voltage—for each user bridge board channel to which a sample may be conventionally wired (figure 1-1). Up to three samples may be mounted on a Resistivity puck, so the Resistivity option may measure up to three samples at one time. Section 3.2 discusses in detail how you mount a sample on a Resistivity puck.

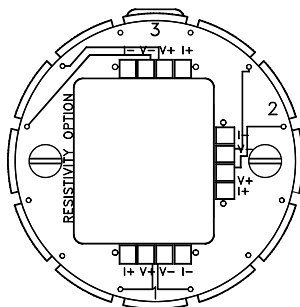


Figure 1-1. Interface on Resistivity Sample Puck

1.2.1 Advantage of Four-Wire Resistance Measurements

Using four wires to attach a sample to a sample puck greatly reduces the contribution of the leads and joints to the resistance measurement. In a four-wire resistance measurement, current is passed through a sample via two current leads, and two separate voltage leads measure the potential difference across the sample (figure 1-2). The voltmeter has a very high impedance, so the voltage leads draw very little current. In theory, a perfect voltmeter draws no current whatsoever. Therefore, by using the four-wire method, it is possible to know, to a high degree of certainty, both the current and the voltage drop across the sample and thus calculate the resistance with Ohm's law.

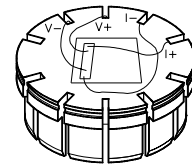


Figure 1-2. Example of four-wire resistance measurement with sample mounted on standard PPMS sample puck.

1.3 Resistivity Option Software

The Resistivity option software is automatically installed when the PPMS MultiVu software application is installed on the control PC, and the Resistivity software is fully integrated into PPMS MultiVu, so PPMS MultiVu commands can be used to automate Resistivity system operation. However, before the Resistivity option can be used, the Resistivity software must be activated within PPMS MultiVu.

Only one measurement option may be active at a time in PPMS MultiVu, so you might have to deactivate another measurement option before you can activate the Resistivity option. Refer to section 1.3.1.

1.3.1 Activating the Resistivity Software

1. Select the **Utilities**►**Activate Option** menu command in PPMS MultiVu. The **Option Manager** dialog box opens. The dialog box lists all options that are available on your PPMS and indicates whether each option is active.
2. Select **Resistivity** in the **Available Options** panel, and then select **Activate**.

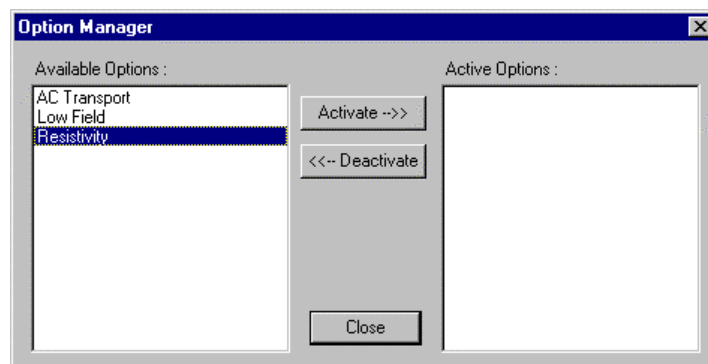


Figure 1-3. Option Manager Dialog Box

Note that only one measurement option may be active at a time. An error message pops up if you attempt to activate a second measurement option. If you need to deactivate an option, select it in the **Active Options** panel that is in the **Option Manager** dialog box, and then select **Deactivate**.

As soon as you activate the Resistivity option, the Resistivity control center opens and the **Measure** menu items and measurement sequence commands that are specific to the Resistivity option appear in the PPMS MultiVu interface.

1.3.2 Resistivity Control Center

The Resistivity control center makes basic system operations, such as installing samples, selecting or creating data files, and setting up and running immediate-mode resistance measurements, more natural and convenient. Automated routines initiated with control center commands prompt you to complete the necessary actions to install samples or create data files. Clearly labeled data fields indicate whether a sample is installed in the PPMS sample chamber or identify which measurement data file—if any—is selected to store Resistivity measurement data. Using the control center to perform all normal system operations is encouraged.

The Resistivity control center opens as soon as the Resistivity option is activated. The control center may be minimized, but will not close until the option is deactivated.

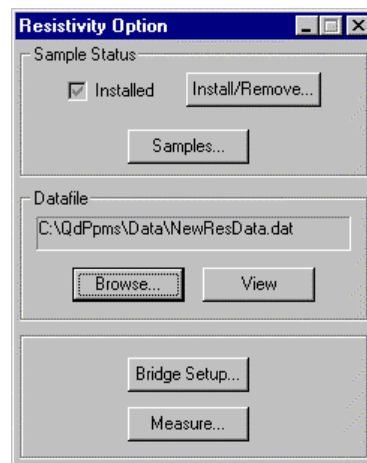


Figure 1-4. Resistivity Control Center

User Bridge Board Operation

2.1 Introduction

This chapter contains the following information:

- Section 2.2 discusses the functionality of the user bridge board.
- Section 2.3 explains how to change the user bridge board settings.
- Section 2.4 describes the operation of the user bridge board.

2.2 Function of the User Bridge Board

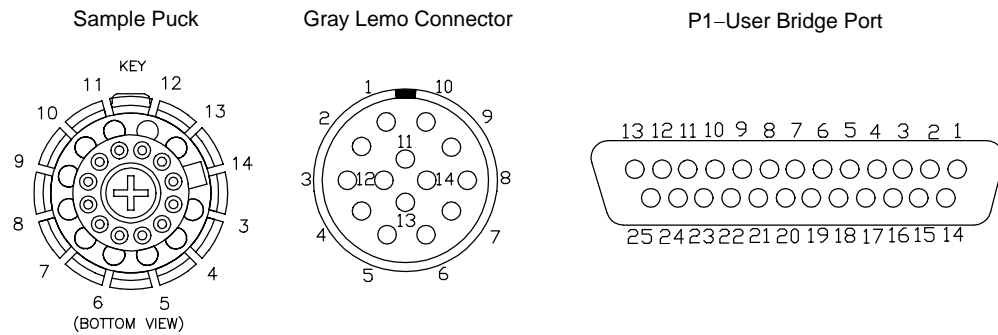
The user bridge board, which is the primary hardware component of the PPMS Resistivity option, is a nondedicated, configurable resistance bridge board. The user bridge board is installed behind and accessed through the “P1–User Bridge” port on the Model 6000 PPMS Controller. An electrical cable connects the “P1–User Bridge” port to the gray-ringed Lemo connector on the PPMS probe head and thus connects the user bridge board to the sample installed in the PPMS sample chamber. Table 2-1 identifies the electrical connections for the Resistivity option. Appendix A in the *Physical Property Measurement System: Hardware Manual* identifies all electrical connections used in a standard PPMS.

The user bridge board has several essential elements, as shown in figure 2-1 on page 2-3. A 12-bit (11-bit + sign) digital-to-analog converter (DAC) adjusts the excitation current up to ± 5 mA. The current range and channel selection are performed internally. A 20-bit delta-sigma A/D converter reads the voltage output of the variable gain stage. The bridge board’s A/D converter contains 50-Hz and 60-Hz notch filters to reject line noise. In addition, a set of 0.01% bulk metal foil resistors is used internally as calibration resistors.

In January 1996, a new feature was added to the user bridge board. The negative current leads for each channel, which were previously tied directly to a common ground, were switched in and out of the measurement circuit like the rest of the leads. This modification allows multiple channels to be connected to the same sample without shorting out the excitation signal. User bridge boards assembled prior to 1996 do not have this capability.

In addition to the user bridge board, all PPMS units include another resistance bridge board, called the system bridge board, that is installed behind the “P2–System Bridge” port on the Model 6000 PPMS Controller. The operation of the system bridge board and user bridge board is nearly identical, but the system bridge board is essentially nonconfigurable. Three of its four channels are dedicated to system thermometry, and the fourth channel is reserved for other PPMS options. Consequently, the user bridge board must be installed to take four-wire resistance measurements.

Table 2-1. Sample Connections with User Bridge Cable Connected



The sample connector is at the bottom of the sample chamber. The gray Lemo connector is on the probe head. Pins 1 and 2 on the gray Lemo connector are connected to wires that extend into the annulus. These wires are not used for any function, but provide a site for system expansion. The “P1–User Bridge” “D” connector is on the Model 6000.

SAMPLE PUCK	SAMPLE CONNECTOR	GRAY LEMO CONNECTOR	P1–USER BRIDGE “D” CONNECTOR	USER BRIDGE BOARD FUNCTION
			1	Cur Driver 1+ (unused)
			14	Cur Driver 1– (unused)
			2	Cur Driver 2+ (unused)
			15	Cur Driver 2– (unused)
3	3	3	5	Channel 1 I+
4	4	4	18	Channel 1 I–
5	5	5	6	Channel 1 V+
6	6	6	19	Channel 1 V–
7	7	7	7	Channel 2 I+
8	8	8	20	Channel 2 I–
9	9	9	8	Channel 2 V+
10	10	10	21	Channel 2 V–
11	11	11	9	Channel 3 I+
12	12	12	22	Channel 3 I–
13	13	13	10	Channel 3 V+
14	14	14	23	Channel 3 V–
			11	Channel 4 I+
			24	Channel 4 I–
			12	Channel 4 V+
			25	Channel 4 V–
			13	Shield

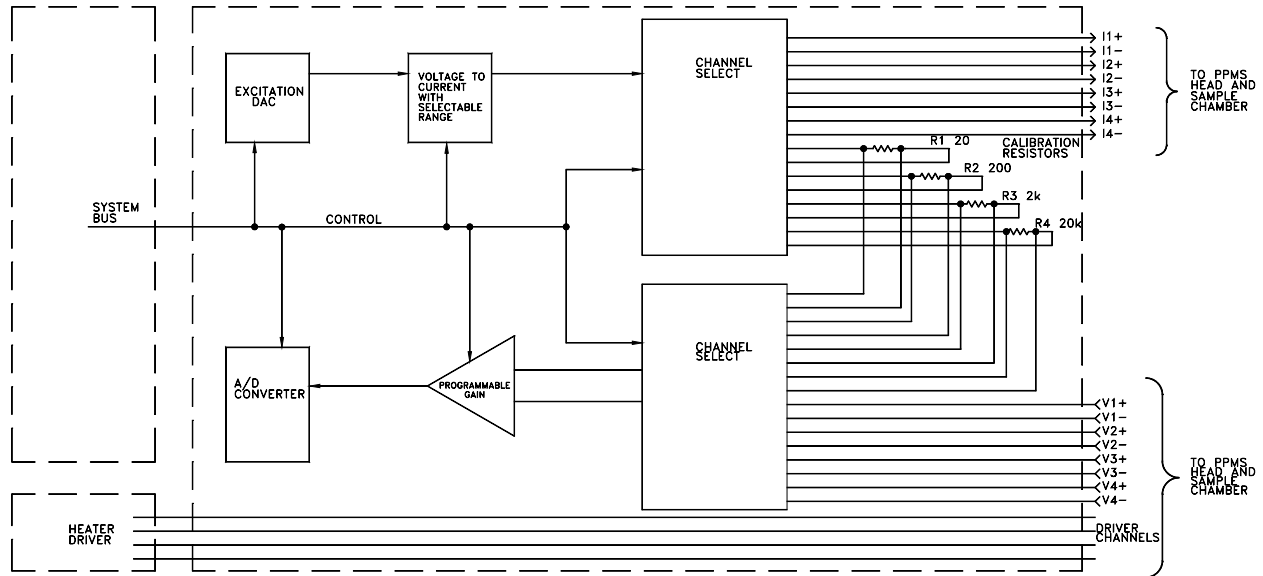


Figure 2-1. Block Diagram of Bridge Board

2.2.1 Limits and Resolution

The user bridge board automatically adjusts the excitation current of its active channels, but you can specify the maximum allowable current, power, and voltage for each channel (see table 2-2). The excitation current is limited by the specified maximum current, voltage, or power—whichever parameter setting limits the excitation current to a lower value.

Table 2-2. Current, Power, and Voltage Limits

PARAMETER	VALUES
Current Limit	$\pm 0.01\text{--}5000 \mu\text{A}$
Power Limit	$0.001\text{--}1000 \mu\text{W}$
Voltage Limit	$1\text{--}95 \text{ mV}$

The nominal resolution of the user bridge board is determined by the resolution of the A/D converter and by the maximum applicable current. Accordingly, nominal resolution on the most sensitive range is $3.81 \text{ nV}/5.00 \text{ mA} = 0.762 \mu\Omega$. In practice, environmental and internal noise sources usually limit measurement precision to around 20 nV , or $4 \mu\Omega$ with a 5-mA excitation. Measurement resolution also depends on the internal gain setting and the excitation current, which can be affected by the resistance being measured and by the specified limits for current, power, and voltage.

The maximum measurable resistance is computed from the maximum potential drop that can be measured and from the minimum useful excitation current, which is determined by the user bridge's DAC resolution. The nominal maximum measurable resistance is thus $95 \text{ mV}/2.44 \text{ nA} = 38.9 \text{ M}\Omega$. However, such a measurement would require an excitation current very near the DAC resolution. In practice, user bridge board error increases drastically above approximately $4 \text{ M}\Omega$. Errors in excess of 1% can be anticipated when measuring resistances greater than $4 \text{ M}\Omega$. The expected error increases to 5–10% around $9 \text{ M}\Omega$.



The parameter ranges in this section represent the broadest limits. Current limitations set by the user-specified current, power, or voltage limit can alter these values.

2.2.2 Internal Excitation Current Range Selection

The excitation current range selection for the user bridge board is performed internally. However, it is useful to understand the range selection process. Table 2-3 lists the four excitation current ranges and the corresponding step sizes.

The bridge board uses the range resulting in the smallest step size while still providing the necessary current. For display purposes, the excitation current is rounded to the nearest step value.

Step size is calculated by

$$\text{Step Size} = \frac{\text{Max Current}}{2^{11}}$$

because the excitation DAC is 11 bits (bit 12 designates the current's sign).

Table 2-3. Current Ranges

MAXIMUM CURRENT	STEP SIZE
5.0 mA	2.44 μ A
0.5 mA	244.00 nA
50.0 μ A	24.40 nA
5.0 μ A	2.44 nA

2.2.3 Calibration Modes

Each active channel on the user bridge board can operate in the fast, standard, or high-resolution calibration mode. The letter “F,” “S,” or “H” is displayed on the Model 6000 front panel to indicate the mode to which each channel is set. Standard mode is the default calibration mode.

Table 2-4. Function and Suggested Use of Calibration Modes

MODE	DEFINITION	USAGE
Fast	Last measured current and voltage are read to calculate resistance. Then resistance is reported without adjusting reading.	<ul style="list-style-type: none"> • For resistance measurements that are part of control loop requiring quick feedback. • To take fastest measurements. • To view noise in signals.
Standard	Last measured current and voltage are read to calculate resistance. Then adjustment factor is used to recalculate and report resistance based on calibration resistor reading.	<ul style="list-style-type: none"> • To compensate for hardware linearity errors, drift, and offset errors.
Hi-Res	Multiple standard mode readings are averaged to maintain uniform precision throughout dynamic range of instrument.	<ul style="list-style-type: none"> • To take high-precision measurements.

2.2.3.1 FAST MODE

In fast mode, the user bridge board reads the last measured current and voltage to directly calculate the sample resistance and then reports the resistance as quickly as possible without adjusting the reading. Fast mode generates the quickest but least accurate measurements and often produces duplicate measurements. Fast mode is useful when resistance measurements are part of a control loop that requires quick feedback.

2.2.3.2 STANDARD MODE

In standard mode, the user bridge board reads the last measured current and voltage to measure the sample resistance—just as in fast mode—but then applies the identical current to an appropriate calibration resistor and measures the potential drop across the resistor with the same gain in order to obtain an adjustment factor. The user bridge board then uses this adjustment factor to recalculate and report the sample resistance. By utilizing calibration resistors whenever possible, standard mode compensates for hardware linearity errors, drift, and offset errors. However, consulting a calibration resistor to complete most readings means that the user bridge channels update more slowly.

If the user bridge settings prohibit use of a calibration resistor, the measured values are not adjusted when the resistance is reported. This situation might arise, for example, when the sample resistance is either too small or too large to be used in conjunction with a calibration resistor without adjusting the gain setting. If the uppercase “S,” which denotes the standard mode setting on the Model 6000 front panel display, changes to a lowercase “s,” the reported value was not adjusted and is therefore equivalent to a reading taken in fast mode.

When operating in standard mode, the user bridge stores any adjustment factors used and reuses them for resistance calculations whenever identical measurement conditions occur on any channel within the next minute. This eliminates repetitive measurement of the calibration resistors. These adjustment factors are updated after one minute and are erased when an **abort** is executed, when a ***CAL?** GPIB command is requested, or when the power is turned off.

2.2.3.3 HIGH-RESOLUTION MODE

In high-resolution mode, the user bridge board averages multiple standard mode readings in order to maintain uniform precision throughout the range of readings. High-resolution mode helps eliminate noise from the readings and generates the most accurate but slowest resistance measurements. If the user bridge settings prohibit use of a calibration resistor, unadjusted values are averaged. The uppercase “H,” which denotes the high-resolution mode setting on the Model 6000 front panel display, changes to a lowercase “h” to indicate that unadjusted values are averaged.

The number of standard mode readings averaged to yield the reported resistance in high-resolution mode varies from 2 to 16 and depends on the divergence of the measured resistance from a base value of 32.767 Ω. The further the resistance is from the base value, the more standard mode readings are averaged to obtain the value reported. The number of readings averaged can be defined as

$$N = \text{Int} \left\{ \left\lceil \frac{\left| \log \left(\frac{R}{32.767 \Omega} \right) \right|}{\log 2} \right\rceil + 2 \right\} ; 2 \text{ m}\Omega \leq R \leq 0.5 \text{ M}\Omega$$

$$N = 16; R < 2 \text{ m}\Omega \text{ or } R > 0.5 \text{ M}\Omega$$

where R is the sample resistance. For resistances between 16.4 Ω and 65.5 Ω, only two standard mode readings are averaged. Resistances greater than about 0.5 MΩ or less than 2 mΩ require 16 readings, as seen in figure 2-2. For small resistances, this averaging helps eliminate noise due to a small voltage readback, and for large resistances it helps eliminate noise due to the low applied current. A measurement that averages 16 readings takes $(7.5 \text{ Hz})^{-1} \times 16 = 2.13$ seconds. Such considerations can be important when writing a sequence file that involves data acquisition.

Number of Readings Averaged Versus Resistance for Bridge Board Operation in High Resolution Mode



Figure 2-2. The number of measurements averaged in high-resolution mode varies from 2 to 16 and depends on how far from the base value of 32.767 Ω the resistance lies. Non-integers on the y-axis are rounded down in this graph.

When operating in high-resolution mode, the user bridge stores any adjustment factors used and reuses them for resistance calculations whenever identical measurement conditions occur on any channel within the next minute. This eliminates repetitive measurement of the calibration resistors. These adjustment factors are updated after one minute and are erased when an **abort** is executed, when a ***CAL? GPIB** command is requested, or when the power is turned off.

2.2.4 Drive Modes

Each active channel on the user bridge board can operate in the AC drive mode or the DC drive mode. AC mode is the default drive mode.

In AC mode, the user bridge board applies a DC excitation to the sample and reads the potential drop across the sample. Then the user bridge board reverses the current and reads the potential drop again. The user bridge averages the absolute value of the positive and negative voltage readings. The AC excitation, which is a square-wave excitation, is synchronized to the AC line frequency of 50 or 60 Hz in order to reject AC line noise. Operation in AC mode eliminates errors from DC offset voltages and produces the most accurate readings. A “±” symbol appearing on the Model 6000 front panel display designates AC mode.

In DC mode, the user bridge board averages two consecutive voltage readings that have the identical polarity. DC mode produces less accurate voltage readings than AC mode, but is a useful mode of operation when reversing polarity would significantly affect the sample. Due to the averaging in DC mode, the effective measurement rate is also 7.5 or 8.3 Hz.

Both AC and DC measurements are synchronized with the power line frequency. If you are working in a 50-Hz environment instead of a 60-Hz environment, the user bridge board measures at 8.33 Hz rather than 7.5 Hz. Measurement rates are also synchronized if the power line frequency is between 45 and 70 Hz.

2.2.5 Internal Voltage Gain Control

The user bridge board performs voltage gain control internally. Because the gain affects measurement resolution, an understanding of the gain control is useful.

All voltage readings are first multiplied by a factor of 25. Automatic gain control further adjusts the gain according to the measurement conditions. The gain is decreased when the A/D converter reads a voltage greater than or equal to 90% of full scale. The gain is increased when the A/D converter reads a voltage less than 9.5% of full scale. If the measured voltage falls in a zone between two gain settings, or below 9.5% of full scale on the highest setting, the gain is not adjusted.

The A/D resolution is determined by the following equation. Like the excitation DAC, the 20-bit A/D converter uses one bit to designate sign.

$$\text{A / D Resolution} = \frac{\text{Full Scale}}{2^{19}}$$

Table 2-5 summarizes the gain settings.

Table 2-5. Voltage Gain Settings

GAIN	FULL SCALE	MAXIMUM VOLTAGE	MINIMUM VOLTAGE	A/D RESOLUTION
×1	100.0 mV	92.0 mV	9.50 mV	190.70 nV
×10	10.0 mV	9.0 mV	0.95 mV	19.07 nV
×25	4.0 mV	3.6 mV	0.38 mV	7.63 nV
×50	2.0 mV	1.8 mV	—	3.81 nV

2.2.6 A/D Converter Calibration

Like other A/D converters in the Model 6000, the user bridge board's A/D converter undergoes self-calibration upon power-up. A/D converter calibration can be invoked at any time with a ***CAL?** remote GPIB command, and calibration automatically occurs after the **abort** command is received. Requesting a calibration temporarily interrupts the flow of data and the Model 6000's control of other devices for approximately 0.5 second. For highest data integrity, a calibration should be performed *before* running each experiment that requires precision data. Requesting a calibration affects *all* PPMS A/D converters and can theoretically introduce data offsets if performed between measurements.

2.3 Changing User Bridge Board Settings

The Resistivity software includes multiple ways to access dialog boxes that can be used to change the current user bridge board channel settings. The Resistivity control center and the **Resistivity** and **Scan Excitation** immediate-mode measurement commands can directly open the **Bridge Channels** dialog box. The **Resistivity** and **Scan Excitation** sequence mode measurement commands open dialog boxes that include a **Bridge Configuration** tab.

The **Bridge Channels** dialog box (figure 2-3) shows the parameter settings for all four channels on the user bridge and indicates whether each channel is active. If a channel is active, the **Bridge Channels** dialog displays the current and resistance the user bridge is measuring across that channel. An active channel is always running and passing current through the sample, regardless of whether a measurement is being performed. Parameter settings for any active channel may be changed immediately by entering or selecting the new values and then selecting the **Set** button. Table 2-6 lists all user-definable parameters and identifies the acceptable parameter ranges.

The **Bridge Configuration** tab (figure 2-4) used to define Resistivity sequence commands also shows the parameter settings for all four user bridge channels. However, the **Bridge Configuration** tab indicates a channel is active only if the tab was previously used to activate the channel, and like all sequence mode dialog boxes, the **Bridge Configuration** tab does not display status information. Parameter settings for any channel activated in the **Bridge Configuration** tab may be changed in the tab, but the new values take effect only when the sequence command is read during a sequence run. If the tab is used simply to activate or deactivate a channel, the state of the channel changes only when the sequence command is read during the sequence run.



CAUTION

An approach algorithm allows the initial excitation to exceed the specified power and voltage limits for one-fifteenth of a second when the sample resistance is greater than 1 k Ω . For this reason, it is important to estimate the sample resistance before taking measurements, and for delicate samples expected to have resistances greater than 1 k Ω , only a current limit that will not exceed the samples' expected power or voltage limit should be specified when first activating a channel.



NOTE

The excitation current of an active user bridge channel is limited by the specified maximum excitation current, voltage limit, or power limit—whichever parameter limits the excitation current to a lower value.

Table 2-6. User Bridge Board Parameters

PARAMETER	FUNCTION DEFINED BY PARAMETER	VALUES
Bridge Channel	Selected channel on user bridge board.	1–4
Current Limit	Maximum excitation current for user bridge channel.	± 0.01 –5000 μ A
Power Limit	Maximum power for user bridge channel.	0.001–1000 μ W
Voltage Limit	Maximum voltage for user bridge channel.	1–95 mV
Calibration Mode	Mode of measuring resistance of sample.	<ul style="list-style-type: none"> <li style="margin-right: 10px;">• Standard <li style="margin-right: 10px;">• Hi-Res • Fast
Drive Mode	Mode of excitation current applied to sample during resistance measurement.	<ul style="list-style-type: none"> <li style="margin-right: 10px;">• AC • DC

While you work with the Resistivity option, you will find using the shortcut commands that access the user bridge parameter dialog boxes directly from the control center or the measurement dialog boxes very convenient. You may also use standard PPMS MultiVu commands to change user bridge settings. The **Instrument►Bridge Channels** menu option opens the **Bridge Channels** dialog box. The **Bridge Setup** sequence command changes user bridge settings within a running sequence. These two PPMS MultiVu commands function only if a user bridge board is installed in the Model 6000. Refer to the *Physical Property Measurement System: PPMS MultiVu Application User's Manual* for a detailed discussion of all PPMS MultiVu commands and operations.

2.3.1 Using the Bridge Channels Dialog Box to Change Bridge Settings

1. Select the **Bridge Setup** button in the Resistivity control center or in the **Resistivity Quick Measure** or **Scan Excitation Quick Measure** dialog box. The **Bridge Channels** dialog box opens.

The Resistivity software gives you the option to review or change user bridge settings at any time. Selecting **Bridge Setup** in the measurement dialog boxes lets you change user bridge settings while you are defining a measurement.

You may close the **Resistivity Quick Measure** or **Scan Excitation Quick Measure** dialog box and keep the **Bridge Channels** dialog box open.

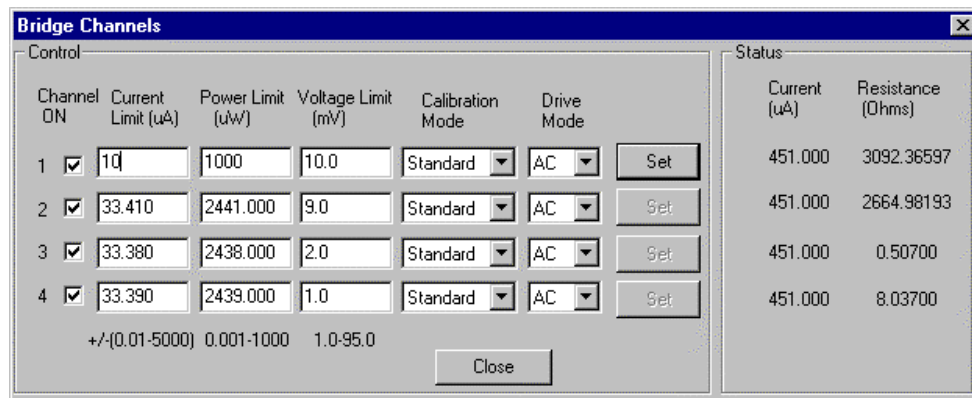


Figure 2-3. **Bridge Channels** Dialog Box

2. Verify that the user bridge channel or channels whose parameter settings you want to change are activated. Activate channels as necessary by clicking on the appropriate **Channel On** check boxes so that a check mark appears in the check boxes. In figure 2-3, all four channels are activated.

If you want to deactivate a channel, click once on the appropriate **Channel On** check box so that the check mark disappears.

3. Set the maximum excitation current for each channel as necessary. Specifying a current limit of zero for any channel deactivates the channel. Table 2-6 and the **Bridge Channels** dialog box identify the acceptable parameter ranges.

Notice that as soon as you change a parameter value for any channel, the channel's **Set** button in the **Bridge Channels** dialog box is enabled.

4. Set the power limit for each channel as necessary. Specifying a power limit of zero for any channel deactivates the channel.
5. Set the voltage limit for each channel as necessary.

6. Select the calibration mode the channel uses to measure sample resistance. The standard, fast, and high-resolution modes are available. Section 2.2.3 discusses the calibration modes in detail. Table 2-4 suggests possible uses for each mode.
7. Select the drive mode the channel uses during the resistance measurement. The AC and DC drive modes are available. You are advised to use AC mode unless reversing polarity would significantly affect the sample. Section 2.2.4 discusses the drive modes in detail.
8. Select the enabled **Set** button for each channel in order to put the changes you have made into effect. Changes to all other controls, including deactivating the **Channel On** check box, are initiated only when you select **Set**.
9. Select **Close** if you want to close the **Bridge Channels** dialog box.

2.3.2 Using the Bridge Configuration Tab to Change Bridge Settings

1. Select the **Bridge Configuration** tab in the **Resistivity** or **Scan Excitation** dialog box. These dialog boxes open only when the **Resistivity** or **Scan Excitation** sequence mode command is selected. Refer to sections 3.3.1.2 and 3.3.2.2 for information on sequence mode measurements.

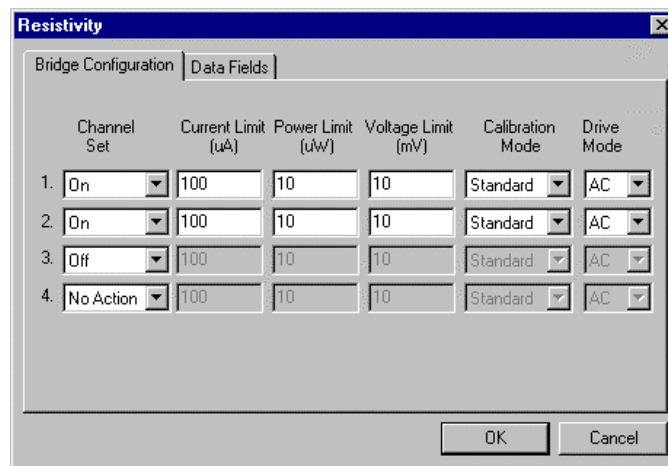


Figure 2-4. Bridge Configuration Tab in Resistivity Dialog Box

2. Use the **Channel Set** pull-down menu to activate the user bridge channel or channels whose parameter settings you want to change. The text boxes and menus are enabled only when the corresponding channel is activated.
The **No Action** option in the **Channel Set** pull-down menu prevents the state of a channel from being altered. The **Off** option deactivates the channel.
3. Set the maximum excitation current for each channel as necessary. Specifying a current limit of zero for any channel deactivates the channel. Table 2-6 identifies the acceptable parameter ranges.
4. Set the power limit for each channel as necessary. Specifying a power limit of zero for any channel deactivates the channel.
5. Set the voltage limit for each channel as necessary.
6. Select the calibration mode the channel uses to measure sample resistance. The standard, fast, and high-resolution modes are available. Section 2.2.3 discusses the calibration modes in detail. Table 2-4 suggests possible uses for each mode.

7. Select the drive mode the channel uses during the resistance measurement. The AC and DC drive modes are available. You are advised to use AC mode unless reversing polarity would significantly affect the sample. Section 2.2.4 discusses the drive modes in detail.
8. Select the other tab or tabs in the dialog box and finish defining the measurement, if necessary. Refer to sections 3.3.1.2 and 3.3.2.2.
9. Select **OK**. The **Resistivity** or **Scan Excitation** command is added to the selected sequence file. The new parameter settings go into effect when the command is read while the sequence runs.

2.3.3 Using the Model 6000 to Change Bridge Settings

You may also use the Model 6000 **Setup Bridge Channel** screen to change user bridge board settings. To open the **Setup Bridge Channel** screen, you select the **STATUS-BRIDGE** screen and then select **setup**, or you enter the **CONTROL** menu and select **3. Immediate Operations**►**06: Bridge**. In the **Setup Bridge Channel** screen, you press **incr** and **decr** to choose a bridge channel. Then you adjust the current limit, power limit, voltage limit, calibration mode, and drive mode as necessary. Once the settings are correct, press **EXEC** <Alt+Enter> to execute them.

The Model 6000 **STATUS-BRIDGE** screen normally displays the status—including resistance, excitation current, calibration mode, and drive mode—of each user bridge channel. However, you can configure the Model 6000 to show the status of the system bridge board channels and calibration channels. To do this, enter the **CONFIG** menu and select **5. Software**. Then select **3. Diagnostics** and change the **Bridge Display Channel** setting to the appropriate display. The **standard** setting displays the four user bridge channels. Once this display is reconfigured, it becomes possible to change system bridge settings simply by selecting **setup** from the **STATUS-BRIDGE** screen. Note, though, that because these channels are used for PPMS temperature control, changing their settings is not recommended.

2.4 Description of User Bridge Board Operation

After any new user bridge board channel settings are executed, excitation current is applied to each active channel, beginning with the lowest numbered channel. If a channel was operating before the new configuration was executed, the user bridge assumes that the resistance has not changed in order to predict the measurement parameters I and V and set the initial excitation current. The initial excitation current is usually the specified current limit. If this current would cause the power to exceed the specified power limit with a 1-k Ω resistance, the user bridge uses a 1-k Ω initial resistance estimate for the first cycle of an approach algorithm. Accordingly, a settling time of a few seconds may be required to reach a stable excitation current. This can be another important consideration when writing sequence files.

At equilibrium, the excitation current equals the current limit setting unless the power limit setting or voltage limit setting is reached. It is important to understand the range of possible excitation currents and potential drops across the sample. You choose the maximum allowable current, voltage, and power through the sample, so measurement parameters are confined to the dark lines in the graph in figure 2-5. When the power limit is set greater than 460 μ W, only the current and voltage limit settings should affect the measurement parameters.

The voltage drop across the sample is read twice—with the same polarity excitation each time for DC mode, and with opposite polarities for AC mode—and the resistance is reported according to one of the three calibration modes. Enabled channels are scanned sequentially and then necessary calibration channels are read. In standard mode, the resistance is not reported until the appropriate calibration resistor has been measured (if this is possible). When a channel is in high-resolution mode, other channels continue to operate as usual, but a resistance is reported for only the high-resolution channel after an appropriate number of readings has been recorded and averaged.

The user bridge board has one current source and voltage detector. Consequently, measurements do not actually occur simultaneously, although the measurements occur so close to each other you really will not notice that they are not simultaneous. On a normal PPMS configured for measurements on three user bridge channels, the first channel measured is 1, and the last channel measured is 3.

An active user bridge board channel is always running and passing current through the sample, regardless of whether a measurement is being performed.

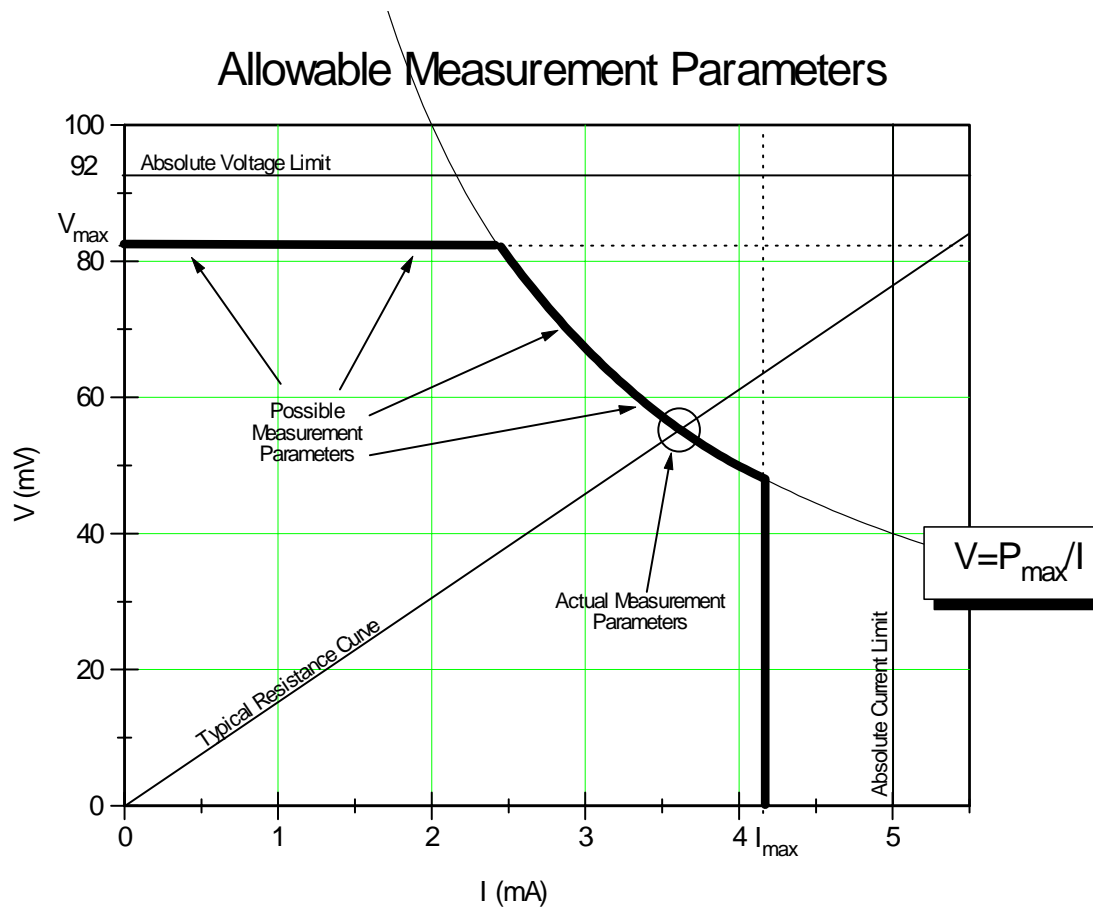


Figure 2-5. The allowed measurement parameters V and I are constrained by the user-specified voltage limit (V_{max}), current limit (I_{max}), and power (P_{max}). This plot shows $V_{max} = 82$ mV, $I_{max} = 4.2$ mA, and $P_{max} = 0.2$ mW.

Four-Wire Resistance Measurements

3.1 Introduction

This chapter contains the following information:

- Section 3.2 explains how to mount samples on Resistivity sample pucks.
- Section 3.3 explains how to take four-wire resistance measurements.
- Section 3.4 discusses the function of Resistivity data files.

3.2 Sample-Mounting Procedures

The interface on the Resistivity puck has three groups of four labeled contact pads corresponding to channels 1 through 3 on the user bridge board. Each group of contacts has one positive contact and one negative contact for both current and voltage (figure 3-1). Up to three samples may be mounted on a conventional Resistivity puck at any given time.

To mount a sample on a Resistivity puck, you position the sample near the center of the puck and use the standard four-wire resistivity measurement setup to connect the sample to channel 1, 2, or 3 on the user bridge. The soft, gold-plated puck contacts allow leads to be soldered or wire bonded to the user bridge channels. After you mount the sample, you verify that the sample is making good contact with the puck. Each sample is associated with only one user bridge channel, and this association is created when you connect the sample to the puck wires read by that channel.

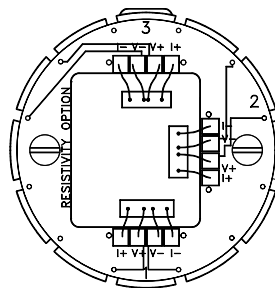


Figure 3-1. Resistivity sample puck with three samples mounted for four-wire resistance measurements.

The Resistivity puck does not include contacts for user bridge channel 4 because channel 4 is not prewired for sample measurements. The 12 pins at the bottom of the PPMS sample chamber allow three samples to be measured; four pins are required to measure one sample. Consequently, user bridge channels 1 through 3 normally take measurements.

The Resistivity option may also be used with standard PPMS sample pucks. When you use the standard sample puck, refer to table 2-1 to determine the correct wiring.

3.3 Taking Four-Wire Resistance Measurements

Resistance can be measured once, or it can automatically be measured with a number of excitation currents in a given excitation current range. The **Resistivity** command takes one resistance measurement. The **Scan Excitation** command takes measurements throughout a specified excitation range. **Resistivity** and **Scan Excitation** can be executed immediately or included in a PPMS MultiVu sequence file.



CAUTION

An approach algorithm allows the initial excitation to exceed the specified power and voltage limits for one-fifteenth of a second when the sample resistance is greater than 1 k Ω . For this reason, it is important to estimate the sample resistance before taking measurements, and for delicate samples expected to have resistances greater than 1 k Ω , only a current limit that will not exceed the samples' expected power or voltage limit should be specified when first activating a channel.

Before you measure resistance, you must (1) mount the sample on a puck and wire the sample to a user bridge channel; (2) insert the sample into the sample chamber by selecting the **Install/Remove** button in the Resistivity control center and following the pop-up instructions; and (3) select or create a new Resistivity data file, if necessary. Section 3.2 explains how you mount samples on Resistivity pucks. Section 3.4.1 explains how you create a data file. Section 3.4.2 explains how you select a data file.

For all normal system operations—installing samples, selecting data files, and taking immediate-mode measurements—you are encouraged to use the Resistivity control center. The automated routines in the control center help ensure that you complete the necessary procedures when you install samples or create data files. The examples of measurements in this chapter illustrate use of the control center.



NOTE

Each sample is associated with one user bridge board channel. The sample's association with a specific channel is identified in the data file header and cannot be changed in PPMS MultiVu. If you change the samples on a puck, insert a new puck, or wire a sample to some other channel, you must create a new data file to ensure that the integrity of the stored data is maintained.

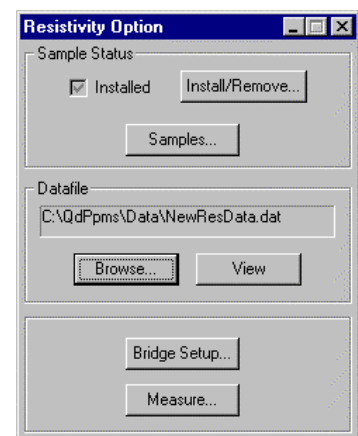


Figure 3-2. Resistivity Control Center

3.3.1 Taking Single-Point Resistance Measurements

The **Resistivity** command, which takes one resistance measurement at the current system conditions, can be executed immediately from the Resistivity control center or the PPMS MultiVu **Measure** menu or it can be included in a sequence.

3.3.1.1 TAKING MEASUREMENTS IN IMMEDIATE MODE

After you insert the sample into the sample chamber and select the data file (see section 3.3), you can define and then run the measurement. Complete the following steps:

1. Select the **Measure** button in the Resistivity control center or select the **Resistivity** option in the **Measure** menu. The **Resistivity Quick Measure** dialog box opens. Items in the **Control** panel on the left side of the dialog box designate measurement conditions that should be set prior to running the measurement. Items in the **Results** panel on the right side of the dialog box display the results of the last single-point resistance measurement that was run in immediate mode.

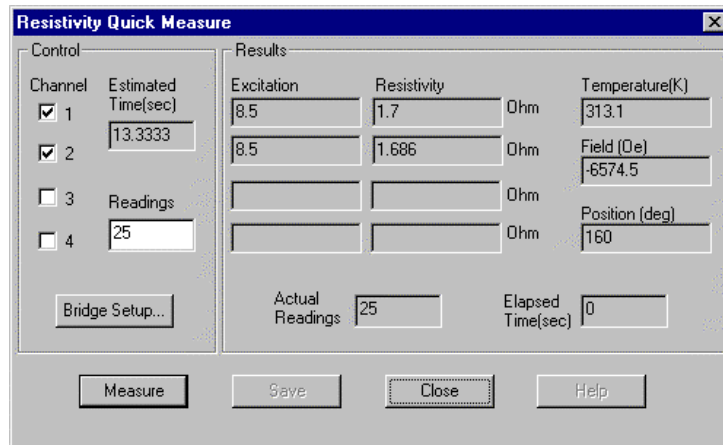


Figure 3-3. Resistivity Quick Measure Dialog Box

2. Select the **Channel** check boxes representing the user bridge channels you want to read. Any number of channels may be read. If you select channels to which no sample is wired, a value of zero is reported when the measurement is complete.
3. Enter, in the **Readings** text box, the number of readings you want the system to take and average for one measurement. The readings are averaged regardless of the calibration mode, so if the channel uses high-resolution mode (see section 2.2.3.3), the operations specific to that mode are performed first, before the Resistivity software averages the readings.
4. Select the **Bridge Setup** button if you want to review or change user bridge settings. A channel must be active to be measured. Section 2.3 explains how you change user bridge settings.
5. Select **Measure**. The measurement begins. The **Measure** button reads **Cancel** during the measurement. You select **Cancel** to abort the measurement.

When the measurement is complete, the **Resistivity Quick Measure** dialog box displays the measurement results as well as the average temperature, magnetic field, and sample position used during the measurement. Resistivity and excitation are reported, in the measurement units that were specified when the data file was created, for the measured channels. Values of zero excitation and zero resistivity are reported for those channels to which no sample is wired.

6. Select the **Save** button in the **Resistivity Quick Measure** dialog if you want to save the measurement results to the specified data file. You must select **Save** in order to save the data. The **Save** button is disabled after you select it, and it remains disabled until another single-point resistance measurement runs. The button is also disabled if a data file has not been selected.
7. Select **Close** if you want to close the **Resistivity Quick Measure** dialog box.

If you saved the measurement data, you may find it useful to examine the data. Clicking on the **View** button in the Resistivity control center opens the graph view of the selected data file. Once the graph view is open, you may select many different graph formats to plot the data, or you may select various other data-viewing formats. The *Physical Property Measurement System: PPMS MultiVu Application User's Manual* discusses data-viewing formats and graph formats in detail.

3.3.1.2 TAKING MEASUREMENTS IN SEQUENCE MODE

After you insert the sample into the sample chamber and select the data file (see section 3.3), you can run a sequence that includes the **Resistivity** command. A Resistivity data file must be selected in order to run a sequence that includes the **Resistivity** or **Scan Excitation** command.

Complete the following steps to take a resistance measurement in sequence mode. You should refer to the *Physical Property Measurement System: PPMS MultiVu Application User's Manual* for a detailed discussion of sequence operation.

1. Select the **New Sequence File** button in the PPMS MultiVu tool bar. A new sequence file is created. The sequence command bar also opens.
2. Select the **Resistivity** command in the **Measurement Commands** group that is in the sequence command bar. The **Resistivity** dialog box opens and displays the **Bridge Configuration** tab.

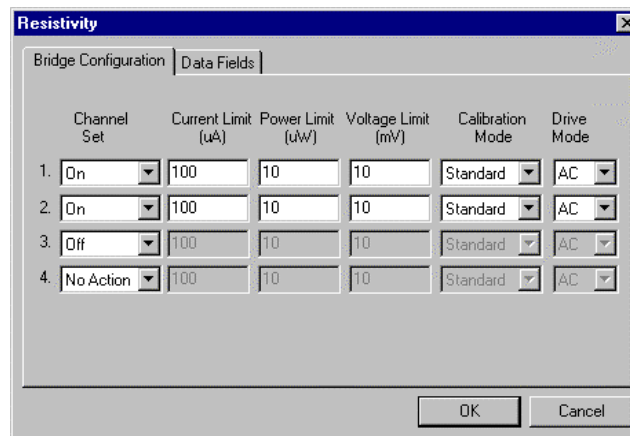


Figure 3-4. **Bridge Configuration** Tab in **Resistivity** Dialog Box

3. Use the **Channel Set** pull-down menu in the **Bridge Configuration** tab to activate the user bridge channels you want to read. Any number of channels may be read. You may use the **No Action** option to prevent the channel state from being altered when the command is executed.
4. Change the settings of the active user bridge channels as necessary. Section 2.3 explains how you change user bridge settings.

When you use the **Resistivity** sequence command to activate user bridge channels, the resistivity and excitation read off the activated channels are saved to the data file, and the data items for the activated channels are automatically selected in the **Data Fields** tab (see figure 3-5). When a user bridge channel is deactivated—that is, set to **Off**—no data can be collected for that channel.

5. Use the **Data Fields** tab to select the system data items you want to save to the data file. By default, the general system status, temperature, magnetic field, and sample position are selected to be saved. The resistivity and excitation read off the active channels are also saved to the file.

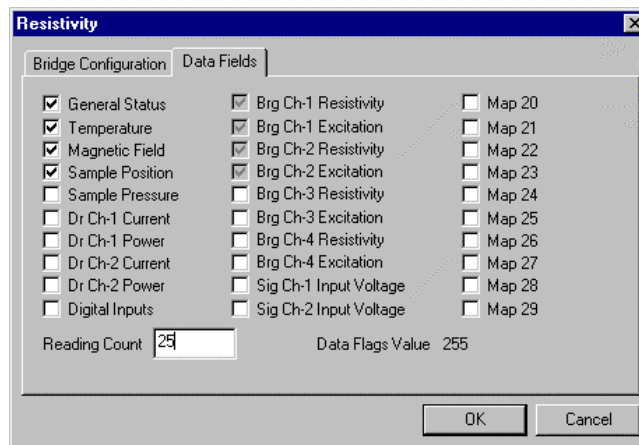


Figure 3-5. **Data Fields** Tab in **Resistivity** Dialog Box

6. Enter, in the **Reading Count** text box, the number of readings you want the system to take and average for one measurement. The readings are averaged regardless of the calibration mode, so if the channel uses high-resolution mode (see section 2.2.3.3), the operations specific to that mode are performed first, before the Resistivity software averages the readings.
7. Select **OK** to add the **Resistivity** command to the sequence.
8. Select the **Save Sequence File** button in the PPMS MultiVu tool bar, type a file name for your sequence, and then select **Save** in the pop-up dialog box.
9. Select the **Run Sequence** button in the PPMS MultiVu tool bar. You saved your new sequence and selected a data file, so the sequence should run immediately. Status messages in the PPMS MultiVu interface indicate that a sequence is running. The commands in the sequence determine the length of time the sequence runs. The **Resistivity** command you included in the sequence is executed when it is read during the sequence run.

3.3.2 Taking Multiple Resistance Measurements

The **Scan Excitation** command, which takes resistance measurements throughout a specified excitation range, can be executed immediately from the PPMS MultiVu **Measure** menu or it can be included in a sequence. Resistance measurements taken with **Scan Excitation** are actually taken one at a time, although the measurements may be read so rapidly they appear to be taken simultaneously.

3.3.2.1 TAKING MEASUREMENTS IN IMMEDIATE MODE

After you insert the sample into the sample chamber and select the data file (see section 3.3), you can define and then run the measurement. Complete the following steps:

1. Select **Measure**►**Scan Excitation**. The **Scan Excitation Quick Measure** dialog box opens. Items in the **Control** panel on the left side of the dialog box designate measurement conditions that should be set prior to running the measurement. Items in the **System** panel on the right side of the dialog box indicate what the values of key system parameters were during the last multiple-point resistance measurement run in immediate mode.
2. Select the **Channel** option representing the user bridge channel you want to read.
3. Use the **Initial** text box to specify the starting current in the excitation range. Notice that when you change the excitation range, the value of **Delta**, which is the excitation step size, is adjusted.
4. Use the **Final** text box to specify the final current in the excitation range.
5. Change the value of **Delta**, if necessary. If you change **Delta**, the **Steps** value is adjusted.
6. Use the **Steps** text box to specify the number of different excitation currents at which measurements are read in the excitation range. Specifying the number of steps is not mandatory. If you change the number of steps, the **Delta** value is adjusted.
7. Use the **Spacing** pull-down menu to select the mode of spacing the steps. Linear mode, which is the default, evenly spaces the steps. Logarithmic mode logarithmically spaces the steps. Power mode separates the steps by i^2 .
8. Enter, in the **Readings** text box, the number of readings you want the system to take and average at each step in the excitation range. The readings are averaged regardless of the calibration mode, so if the channel uses high-resolution mode (see section 2.2.3.3), the operations specific to that mode are performed first, before the Resistivity software averages the readings.
9. Select the **Bridge Setup** button if you want to review or change user bridge settings. A channel must be active to be measured. Section 2.3 explains how you change user bridge settings.
10. Select **Measure**. The measurement begins. The **Measure** button reads **Cancel** during the measurement. You select **Cancel** to abort the measurement.

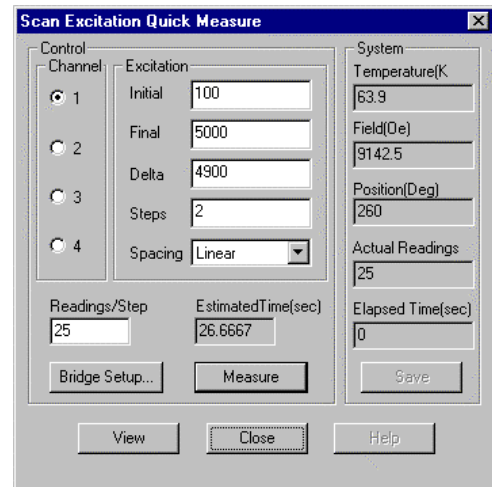


Figure 3-6. **Scan Excitation Quick Measure** Dialog Box

As soon as the measurement is complete, the **Scan Excitation Quick Measure** dialog box displays the average temperature, magnetic field, and sample position used during the measurement, as well as the number of readings taken and the elapsed time of the measurement. The actual number of readings taken during the measurement is shown in the **Actual Readings** panel.

11. Select the **View** button in the **Scan Excitation Quick Measure** dialog box if you want to open the `qd_resistivity_temporary.dat` file and see a plot of the measurement. **View** opens the file only when a Resistivity data file is selected to store data and a multiple-point resistance measurement has just been run in immediate mode.
The `qd_resistivity_temporary.dat` file is overwritten each time another multiple-point resistance measurement runs in immediate mode.
12. Select the **Save** button in the **Scan Excitation Quick Measure** dialog if you want to save the measurement results to the specified data file. You must select **Save** in order to save the data. The **Save** button is disabled after you select it and remains disabled until another multiple-point resistance measurement runs. The button is also disabled if a data file has not been selected.
13. Select **Close** if you want to close the **Scan Excitation Quick Measure** dialog box.

3.3.2.2 TAKING MEASUREMENTS IN SEQUENCE MODE

After you insert the sample into the sample chamber and select the data file (see section 3.3), you can run a sequence that includes the **Scan Excitation** command. A Resistivity data file must be selected in order to run a sequence that includes the **Resistivity** or **Scan Excitation** command.

The **Scan Excitation** sequence command functions similarly to other PPMS MultiVu scan commands. When the system reads **Scan Excitation** in a running sequence, it takes measurements, on all active user bridge channels, throughout the entire excitation range before executing the next command in the sequence. **Scan Excitation** thus simplifies the process of scanning through an excitation range, and by reducing the number of commands in a sequence, **Scan Excitation** helps prevent the sequence file from getting too large. However, **Scan Excitation**, unlike other scan commands, creates a one-line control loop into which no additional commands may be inserted. Refer to the *Physical Property Measurement System: PPMS MultiVu Application User's Manual* for a detailed discussion of scan commands and control loop operation.

Complete the following steps to take multiple resistance measurements in sequence mode. You should refer to the *Physical Property Measurement System: PPMS MultiVu Application User's Manual* for a detailed discussion of sequence operation.

1. Select the **New Sequence File** button in the PPMS MultiVu tool bar. A new sequence file is created. The sequence command bar also opens.
2. Select the **Scan Excitation** command in the **Measurement Commands** group that is in the sequence command bar. The **Scan Excitation** dialog box opens and displays the **Scan Setup** tab.

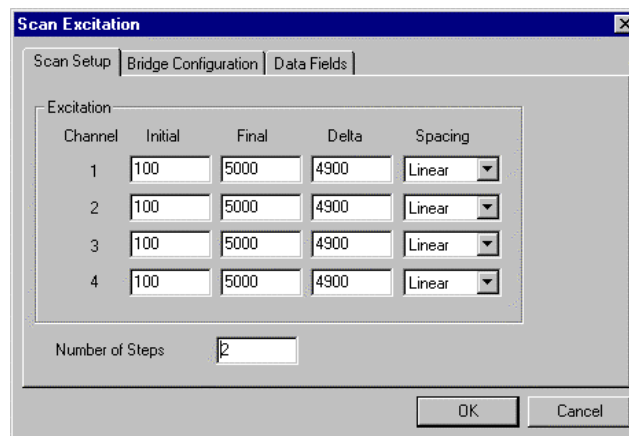


Figure 3-7. **Scan Setup** Tab in **Scan Excitation** Dialog Box

3. Use the **Scan Setup** tab to define the excitation range and the mode of spacing the steps within the excitation range. See section 3.3.2.1 for an explanation of the **Scan Excitation** parameters.
4. Use the **Channel Set** pull-down menu in the **Bridge Configuration** tab to activate the user bridge channels you want to read. Any number of channels may be read. You may use the **No Action** option to prevent the channel state from being altered when the command is executed.
5. Change the settings of the active user bridge channels as necessary. Section 2.3 explains how you change user bridge settings.

When you use the **Scan Excitation** sequence command to activate user bridge channels, the resistivity and excitation read off the activated channels are saved to the data file, and the data items for the activated channels are automatically selected in the **Data Fields** tab (see figure 3-5). When a user bridge channel is deactivated—that is, set to **Off**—no data can be collected for that channel.

6. Use the **Data Fields** tab to select the system data items you want to save to the data file. By default, the general system status, temperature, magnetic field, and sample position are selected to be saved. The resistivity and excitation read off the active channels are also saved to the file.
7. Enter, in the **Reading Count** text box, the number of readings you want the system to take and average at each step in the excitation range. The readings are averaged regardless of the calibration mode, so if the channel uses high-resolution mode (see section 2.2.3.3), the operations specific to that mode are performed first, before the Resistivity software averages the readings.
8. Select **OK** to add the **Scan Excitation** command to the sequence.
9. Select the **Save Sequence File** button in the PPMS MultiVu tool bar, type a file name for your sequence, and then select **Save** in the pop-up dialog box.
10. Select the **Run Sequence** button in the PPMS MultiVu tool bar. You saved your new sequence and selected a data file, so the sequence should run immediately. Status messages in the PPMS MultiVu interface indicate that a sequence is running. The commands in the sequence determine the length of time the sequence runs. The **Scan Excitation** command you included in the sequence is executed when it is read during the sequence run.

3.4 Resistivity Data Files

Resistivity measurement data files store measurement results and other relevant parameters read by the Model 6000 PPMS Controller during resistance measurements. The Resistivity software creates Resistivity measurement data files and lets only Resistivity measurement data files be selected to store data from Resistivity measurements. Like any PPMS MultiVu measurement data file, Resistivity measurement data files have a `.dat` file extension.

By default, the Resistivity software records the following data for every measurement: the resistivity and excitation read off each measured user bridge board channel; the general PPMS status code; and the average system temperature, magnetic field, and sample position from the measurement. The two Resistivity measurement sequence commands allow you to select which PPMS system data items you want to save to the data file.

The header of each Resistivity data file includes file and sample property information that is defined at the time the data file is created. When you create a new file, the Resistivity software prompts you to define the sample properties for the sample or samples whose measurement data will be saved to the file. Information written to the data file header cannot subsequently be changed in PPMS MultiVu. Subsequently changing samples without changing the data files can destroy the validity of the data in the files.



Each sample is associated with one user bridge channel. The sample's association with a specific channel is identified in the data file header and cannot be changed in PPMS MultiVu. If you change the samples on a puck, insert a new puck, or wire a sample to some other channel, you must create a new data file to ensure that the integrity of the stored data is maintained.

The **Datafile** panel in the Resistivity control center (see figure 3-2) identifies which Resistivity measurement data file is selected to store the Resistivity measurement data, and also maps the file location. The panel is blank if a data file has not been selected.

Selecting the **View** button in the control center opens the graph view of the currently selected Resistivity data file. The *Physical Property Measurement System: PPMS MultiVu Application User's Manual* discusses your options for plotting and viewing data.

3.4.1 Creating a Resistivity Data File

1. Select the **Browse** button in the Resistivity control center. The **Select a Data File** dialog box opens. The dialog box lists all existing data files.
2. Select the drive and directory where the new data file will reside, if necessary. The default directory to which PPMS MultiVu writes data files is `C:\QdPpms\Data`.
3. Use the **File name** text box in the **Select a Data File** dialog box to enter the name of the new data file. Creating a name that helps identify the file as a Resistivity data file is useful. If you enter the name of an existing file, that file will be overwritten.
4. Select **Open**. The **File and Sample Properties** dialog box opens (figure 3-8), and all data entry fields in the dialog box are enabled.

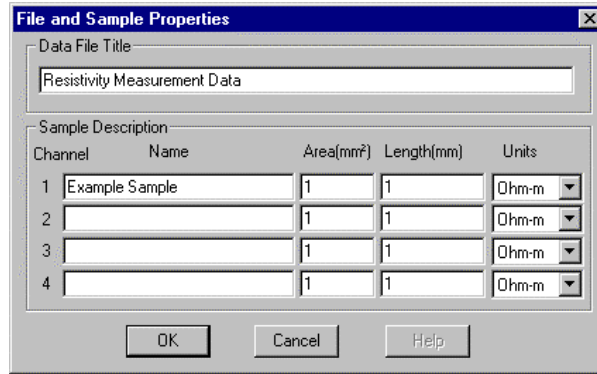


Figure 3-8. File and Sample Properties Dialog Box

5. Use the **Data File Title** text box in the **File and Sample Properties** dialog to specify a title for the graph view of the data file, if you like. Specifying a title for the graph view is not mandatory.
6. Enter, in the **Sample Description** text boxes representing the user bridge channel or channels to which the installed sample or samples are connected, the following information:
 - (a) The name or a description of each sample.
 - (b) The area, in mm², of each sample. Use “1” if you are uncertain what the area of the sample is. A value of 1 will not affect the data.
 - (c) The length, in mm, of each sample. Use “1” if you are uncertain what the length of the sample is. A value of 1 will not affect the data.

The information you enter in the **File and Sample Properties** dialog box is saved to the data file header. Enter the information carefully; it cannot be subsequently changed in PPMS MultiVu.

7. Select the units in which you want the measurement results reported for each channel to which a sample is connected. The units determine the specific type of data saved for that channel. In addition to the resistivity, the data file also stores the resistance for each measurement.
8. Select **OK**. The data file is created, and its name and file location are displayed in the **Datafile** panel in the Resistivity control center.

Notice that if you select the **Samples** button in the Resistivity control center after you create the data file, all data entry fields in the **File and Sample Properties** dialog box are disabled.

3.4.2 Selecting a Resistivity Data File

1. Select the **Browse** button in the Resistivity control center. The **Select a Data File** dialog box opens. The dialog box lists all existing data files.
2. Double-click on the name of a Resistivity data file. A warning message pops up if you try to select a file that is incompatible with the Resistivity option.

As soon as you select a Resistivity data file, the **File and Sample Properties** dialog box opens and displays the information stored in the data file header. All data entry fields in the dialog box are disabled.

3. Review the information in the **File and Sample Properties** dialog box to determine whether you have selected the correct data file for your sample. If the file stores data for some other sample or for some other sample-wiring arrangement, return to step 2 and select another data file.
4. Select **OK** to close the **File and Sample Properties** dialog box and to prompt the Resistivity software to store all new measurement data in the selected data file.

3.4.3 Adding a Comment to a Resistivity Data File

You can append a comment containing any number of characters to the selected Resistivity measurement data file. Because the comment is appended to only the selected data file, you should first verify that the file to which you want to append the comment is selected.

In immediate mode, you append a comment to a data file by selecting the **Measure**►**Add Datafile Comment** menu option, entering the comment in the pop-up dialog box, and then selecting **OK**. In sequence mode, you select the **Datafile Comment** measurement sequence command, enter the comment, and then select **OK**. You may add only a comment to a data file; you may not insert a blank line into a data file.

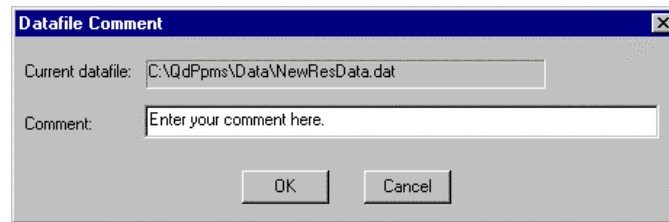


Figure 3-9. **Datafile Comment** Dialog Box for Immediate Mode

3.4.4 Changing Resistivity Data Files during a Sequence Run

The Resistivity option includes the **Change Datafile** sequence command. When the **Change Datafile** command is executed, it prompts the system to start saving Resistivity measurement data and the selected system parameter data to the new data file specified by the command. You can use **Change Datafile** to select an existing data file or to create a new data file.

Complete the following steps to change data files during a sequence run:

1. Position the highlight bar in the sequence editor so that the highlight bar marks the location where you want to insert the **Change Datafile** command. New commands are inserted immediately above the highlight bar. Refer to the *Physical Property Measurement System: PPMS MultiVu Application User's Manual* for detailed information about sequence operation.
2. Select the **Change Datafile** command in the **Measurement Commands** group that is in the sequence command bar. The **Change Datafile Sequence** dialog box opens and displays the **Datafile** tab.
3. Select **Browse**. The **Select a Data File** dialog box opens. The dialog box lists all existing data files.
4. Select or create a data file as necessary. Refer to sections 3.4.1 and 3.4.2. As soon as you select or create a file, you see the **Datafile** tab in the **Change Datafile Sequence** dialog box again. The tab shows the file location and name of the data file you have just selected.
5. If you are selecting a data file, use the **Sample** tab in the **Change Datafile Sequence** dialog box to determine whether you have selected an appropriate data file for your sample. If the file stores data for some other sample or for some other sample-wiring arrangement, select another file.
6. Select **OK** to add the **Change Datafile** command to the sequence file.

Operation with the Helium-3 System

4.1 Introduction

This chapter contains the following information:

- Section 4.2 presents an overview of Resistivity operation with the Helium-3 system.
- Section 4.3 describes how to take Resistivity measurements when using the Helium-3 system.

4.2 Overview of Resistivity Operation with the Helium-3 System

The Resistivity option may be used with the PPMS Helium-3 Refrigerator System insert (Model P825). Use of the Helium-3 insert allows resistance measurements to be performed to below 0.4 K. Although samples are mounted differently when the Helium-3 system is being used, the operation of the Helium-3 system is otherwise designed to be as transparent as possible.

The Helium-3 option uses bridge board channel 3 for reading the Helium-3 system thermometer. Because the thermometer excitation power must be kept very low below 1 K, the enhanced bridge board (part number 3076-050) must be used. As of July 1999, the enhanced bridge board ships standard with all Resistivity options. The new enhanced bridge board has been designed with a precision-balanced current source to aid precise readings of large resistances.

To set up the system for resistance measurements, the standard user bridge cable (part number 3084-003) is connected in the usual way; that is, between the gray-ringed Lemo connector on the PPMS probe head and the “P1–User Bridge” port on the Model 6000 PPMS Controller. Because channel 3 is used for thermometry, only channels 1 and 2 are available for measurements.

4.3 Resistivity Measurements with the Helium-3 System

Please refer to the *Physical Property Measurement System: Helium-3 Refrigerator System User's Manual* for complete instructions on handling and operating the PPMS Helium-3 system.

4.3.1 Measurement Setup

4.3.1.1 PREPARE FOR THE MEASUREMENT



CAUTION

Avoid stressing the shaft of the Helium-3 refrigerator probe in any way while you are inserting the refrigerator probe into or removing it from the PPMS sample chamber. The material out of which the probe shaft is constructed is thin and fragile and can easily bend or dent.

1. Remove the Helium-3 refrigerator probe from the sample chamber. Refer to the *Physical Property Measurement System: Helium-3 Refrigerator System User's Manual* for detailed instructions.
2. Quit the Helium-3 software application if the application is running.
3. Install the user bridge cable (part number 3084-003) by plugging the connectors on the cable into the ports indicated by the cable labels.
 - Plug the 14-pin gray Lemo connector into the gray, color-coded port on the probe head.
 - Plug the 25-pin connector labeled "P1 User Bridge" into the "P1–User Bridge" port on the rear of the Model 6000.

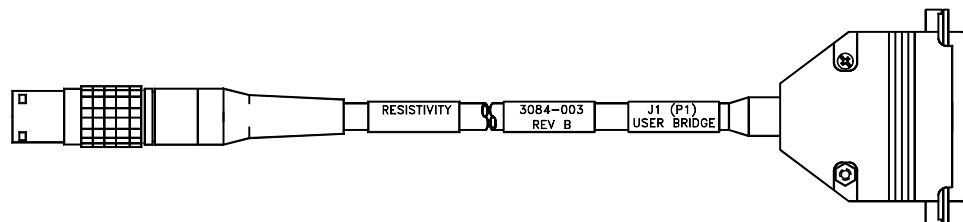


Figure 4-1. User Bridge Cable

4.3.1.2 INSTALL THE SAMPLE

1. Mount the sample on a Helium-3 sample mount (part number 4092-610).
Note that at temperatures below 1 K, intimate thermal contact between the sample and the copper holder is very important to reduce temperature errors. A thin film of Apiezon N Grease works well to aid thermal contact. Apiezon N Grease is supplied with the Model P825 Helium-3 insert.
2. Refer to figure 4-2 below to wire the sample to the stage. The plug-in sample mount is clearly labeled for mounting two samples.

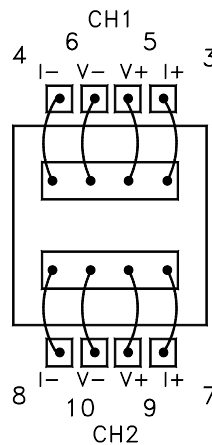


Figure 4-2. Helium-3 sample puck with two samples mounted for four-wire resistance measurements.

3. Attach the plug-in sample stage to the Helium-3 refrigerator probe. Refer to the *Physical Property Measurement System: Helium-3 Refrigerator System User's Manual* for detailed instructions.
4. Insert the Helium-3 refrigerator probe into the sample chamber. Refer to the *Physical Property Measurement System: Helium-3 Refrigerator System User's Manual* for detailed instructions.

4.3.1.3 START UP THE SOFTWARE

1. Start up PPMS MultiVu if the application is not running.
2. Activate the Helium-3 option in PPMS MultiVu. Do the following: (a) select **Utilities** ➤ **Activate Option**, (b) click on **Helium3** under the **Available Options** heading, and then (c) select the **Activate** button.
3. Activate the Resistivity option in PPMS MultiVu. Do the following: (a) select **Utilities** ➤ **Activate Option**, (b) click on **Resistivity** under the **Available Options** heading, and then (c) select the **Activate** button.

Both the Helium-3 software and Resistivity software must be running before you can initiate a measurement.

4. Initiate a Helium-3 system test by using PPMS MultiVu or the Model 6000 front panel to set an initial temperature (for example, 300 K). The Helium-3 temperature control is activated on the first Temperature Set command. The software checks out the Helium-3 system, downloads any necessary configuration data to the Model 6000 console, and begins controlling temperature.

4.3.2 Performing Measurements

Once the Helium-3 refrigerator probe is inserted in the sample chamber and the Helium-3 and Resistivity software applications are running, you may take resistance measurements at temperatures as low as 0.4 K. You take measurements and write sequences according to the usual procedures described in chapter 3. However, there are a few additional considerations for resistance measurements with the Helium-3 system. These considerations are described below.

4.3.2.1 RESERVED CHANNEL 3

Channel 3 on the user bridge board is used exclusively for thermometer readback with the Helium-3 system. You should never attempt to modify the settings for channel 3.



For channel 3, you must always select **No Action** for the **Channel Set** parameter in the **Resistivity** sequence measurement dialog box and the **Scan Excitation** sequence measurement dialog box.

4.3.2.2 EXCITATION LEVELS

The sample mounts provided for mounting samples are constructed of high-conductivity copper to provide good thermal anchoring. However, at temperatures below about 1 K, it is normally very difficult to achieve good thermal contact, even within the sample itself. That is, if the excitation current is too high, significant self-heating of the sample can result in substantial temperature errors where the relevant portions of the sample are warmer than the Helium-3 thermometer reports. Again, this is not necessarily due to poor contact of the sample to the sample holder; it may be due to poor thermal conductance of the sample itself. The best way to detect this effect is to repeat measurements using different bridge-board excitation levels. It is also generally recommended that you use the smallest possible excitation that still gives an adequate signal-to-noise ratio.

4.3.2.3 UNUSED BRIDGE CHANNELS

Due to the extremely low excitation currents used for reading the thermometer on channel 3, there can be significant cross-talk from the other bridge channels under certain conditions. In the worst case, this can produce instabilities in the temperature control.

The worst case cross-talk appears when unused bridge channels are not explicitly turned off. In this case, the current drive multiplexer can create unwanted voltage spikes when switching from an open load to a neighboring channel. *Therefore, always turn off unused bridge channels.*

Operation with the Horizontal Rotator

5.1 Introduction

This chapter contains the following information:

- Section 5.2 presents an overview of Resistivity operation with the Horizontal Rotator.
- Section 5.3 describes how to take Resistivity measurements when using the Horizontal Rotator.

5.2 Overview of Resistivity Operation with the Horizontal Rotator

The Resistivity option may be used with the PPMS Horizontal Rotator option (Model P310). Use of the Horizontal Rotator allows the sample to be rotated around an axis perpendicular to the magnetic field of a longitudinal PPMS magnet.

The Horizontal Rotator option uses bridge board channel 1 for reading the thermometer on the rotator. Consequently, once channel 1 is configured, its settings must not be changed. Only channels 2 and 3 are available for resistance measurements.

The standard user bridge cable (part number 3084-003) is connected to both the gray-ringed Lemo connector on the PPMS probe head and the “P1–User Bridge” port on the Model 6000 PPMS Controller when the Resistivity option is used with the Horizontal Rotator. Figure 4-1 illustrates the user bridge cable.

5.3 Resistivity Measurements with the Horizontal Rotator

Please refer to the *Physical Property Measurement System: Horizontal Rotator Option User's Manual* for complete instructions on handling and operating the PPMS Horizontal Rotator.

5.3.1 Measurement Setup

5.3.1.1 PREPARE FOR THE MEASUREMENT

1. Install the user bridge cable (see figure 4-1) by plugging the connectors on the cable into the ports indicated by the cable labels.
 - Plug the 14-pin gray Lemo connector into the gray, color-coded port on the probe head.
 - Plug the 25-pin connector labeled "P1 User Bridge" into the "P1-User Bridge" port on the rear of the Model 6000.

5.3.1.2 INSTALL THE SAMPLE

1. Mount the sample on a resistance bridge sample holder board (part number 3084-371).
2. Refer to figure 5-1 to wire the sample to the sample holder board. The sample holder board is clearly labeled for mounting two samples.
3. Attach the sample holder board to the rotator transfer case. Refer to the *Physical Property Measurement System: Horizontal Rotator Option User's Manual* for detailed instructions.



CAUTION

The Horizontal Rotator probe is delicate and must be handled with care. Use caution so that you do not dent or bend the stainless steel tube on the outside of the probe. Be extremely careful when placing the probe on a flat surface, such as a table, because the probe may easily roll off.

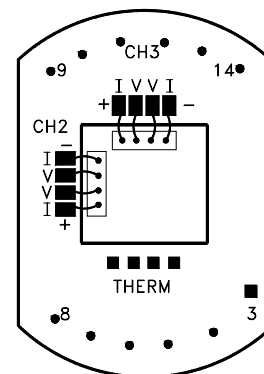


Figure 5-1. Resistance bridge sample holder board with two samples mounted for four-wire resistance measurements.

4. Insert the Horizontal Rotator probe into the sample chamber. Refer to the *Physical Property Measurement System: Horizontal Rotator Option User's Manual* for detailed instructions.

5.3.1.3 START UP THE SOFTWARE

1. Start up PPMS MultiVu if the application is not running.
2. Activate the Resistivity option in PPMS MultiVu. Do the following: (a) select **Utilities**►**Activate Option**, (b) click on **Resistivity** under the **Available Options** heading, and then (c) select the **Activate** button.

5.3.1.4 CONFIGURE THE ROTATOR

1. Download the appropriate configuration file for the rotator in order to set up the rotator thermometry and configure the rotator motor. Refer to the *Physical Property Measurement System: Horizontal Rotator Option User's Manual* for detailed instructions.
2. Engage the rotator motor and check for the proper position calibration. Refer to the *Physical Property Measurement System: Horizontal Rotator Option User's Manual* for detailed instructions.

5.3.2 Performing Measurements

Once the Horizontal Rotator probe is inserted in the sample chamber and the Resistivity software application is running, you may take resistance measurements as you would normally. Refer to chapter 3.

5.3.3 Turning Off UserTemp

Configuring the Horizontal Rotator by transmitting the configuration files to the Model 6000 ROM also turns on UserTemp so that the rotator thermometer is used for temperature control. When you complete your experiments with the Horizontal Rotator and remove the Horizontal Rotator probe from the sample chamber, you should turn off this thermometer. Complete the following steps:

1. Open **Monitor QD-6000** in the **PPMS 32-bit Tools** folder, or select **Utilities**►**Send GPIB Commands** in the PPMS MultiVu interface.
2. Type `USERTEMP 0`.
3. Press <Enter> to execute this command.

If you do not turn off UserTemp, the resistance read off user bridge channel 1 is used to control the temperature in the sample chamber. If UserTemp remains on, but no user thermometer is installed—that is, the Horizontal Rotator probe is removed from the PPMS—the temperature control defaults back to the system thermometers, but returns to user bridge channel 1 whenever a resistance is perceived there. If the resistance is not that of the calibrated rotator thermometer, the temperature controller appears broken, so be sure to turn off UserTemp when you are not using the Horizontal Rotator or another customized calibrated thermometer.

Installation

A.1 Introduction

This appendix contains the following information:

- Section A.2 explains how to install the user bridge board in the Model 6000.

A.2 Installing the User Bridge Board

The user bridge board that is part of the PPMS Resistivity option is generally installed at the Quantum Design factory. The board can, however, be easily installed in the field. These installation instructions explain how to install the user bridge board in the Model 6000 PPMS Controller.

The user bridge board installation kit includes the following items:

- One user bridge board (part number 3076-050)
- Four split-ring lock washers and 4/40 hex nuts to secure user bridge board to motherboard posts
- Two jack sockets to secure 25-pin “D” shell connector to Model 6000 rear panel
- One 9 1/3-inch, 16-wire ribbon cable

A.2.1 Remove the Model 6000 Cover

1. Take all necessary precautions to protect the user bridge board against static electricity or other electrical damage.



CAUTION

Static discharge can damage components on the user bridge board and other components inside the Model 6000. Before you touch the user bridge board or any other component inside the Model 6000, ground yourself by touching the metal back or metal side panel of the Model 6000 case. In addition, limit your movement during installation and whenever you handle the user bridge board; movement increases the possibility of static discharge.

2. Set the system magnetic field to zero and wait for the field to reach zero.
3. Select **CTRL>1. Interactive Control>8. Shutdown Mode** from the Model 6000 front panel. The PPMS enters shutdown mode.
4. Use the switch on the front panel of the Model 6000 to turn off the Model 6000. Do not turn off the vacuum pump or any other electronics in the PPMS electronics cabinet.
5. Clear the top of the PPMS console cabinet, and then remove the top cover of the console cabinet by lifting it up and off the console.
6. Remove the top cover from the Model 6000 as follows:
 - If only the two rear top cover screws (see “A” in figure A-1) secure the top cover, remove these screws, and then remove the top cover.
 - If the two rear top cover screws (see “A” in figure A-1) and the two front top cover screws (see “B” in figure A-1) secure the top cover, do the following:
 - (a) Unscrew the two rack mount screws that attach the Model 6000 to the console cabinet rack.
 - (b) Carefully slide the Model 6000 forward and out of the console approximately 2 inches (5.13 cm). Make certain that you support the full weight of the Model 6000.
 - (c) Remove the two front top cover screws (see “B” in figure A-1).
 - (d) Carefully slide the Model 6000 back into the console cabinet.
 - (e) Screw in the two rack mount screws to attach the Model 6000 mounting brackets to the console cabinet rack.
 - (f) Remove the two rear top cover screws (see “A” in figure A-1).
 - (g) Remove the Model 6000 top cover.

A.2.2 Install the User Bridge Board



CAUTION

Do not drop any components inside the Model 6000. If any components are dropped inside the Model 6000, they must be retrieved before power is restored, or they may cause serious, irreparable damage.



CAUTION

Do not scrape back-plane components or traces while you install the user bridge board.

Before you install the user bridge board, refer to figure A-1 and note the location of the board in the Model 6000. When you face the Model 6000 front panel, the user bridge board is at the right rear side of the controller and is immediately adjacent to the system bridge board (see “D” in figure A-1). The user bridge board sits on four posts (see “C” in figure A-1).

Complete the following steps to install the user bridge board in the Model 6000:

1. Place the user bridge board in the Model 6000.

The 25-pin “D” shell connector fits into the “P1–User Bridge” port located on the Model 6000 rear panel. The four holes in the board fit over the four posts secured on the motherboard.

2. Secure the connector (“P1–User Bridge”) to the rear panel by inserting the two jack sockets (see “E” in figure A-1) through the connector holes, starting from the outer side of the rear panel.
3. Secure the user bridge board to the motherboard posts by (a) placing each washer on a post, (b) placing each nut on a post, and then (c) tightening each nut.
4. Connect the four-wire ribbon cable from the system bridge board to the socket labeled J5 “DRIVER” (see “F” in figure A-1) on the user bridge board.
5. Connect the 16-wire ribbon cable as follows. (a) Connect one end of the cable to the motherboard socket labeled J13 “USER BRIDGE” (see “G” in figure A-1). (b) Connect the other end of the cable to the user bridge board socket labeled J1 “CONTROL” (see “H” in figure A-1).
6. Reinstall the top cover on the Model 6000 by securing it with only the two rear screws (see “A” in figure A-1).
7. Put the top cover back on the console cabinet.
8. Press the power button to turn on the Model 6000.

The system is now ready for normal use.

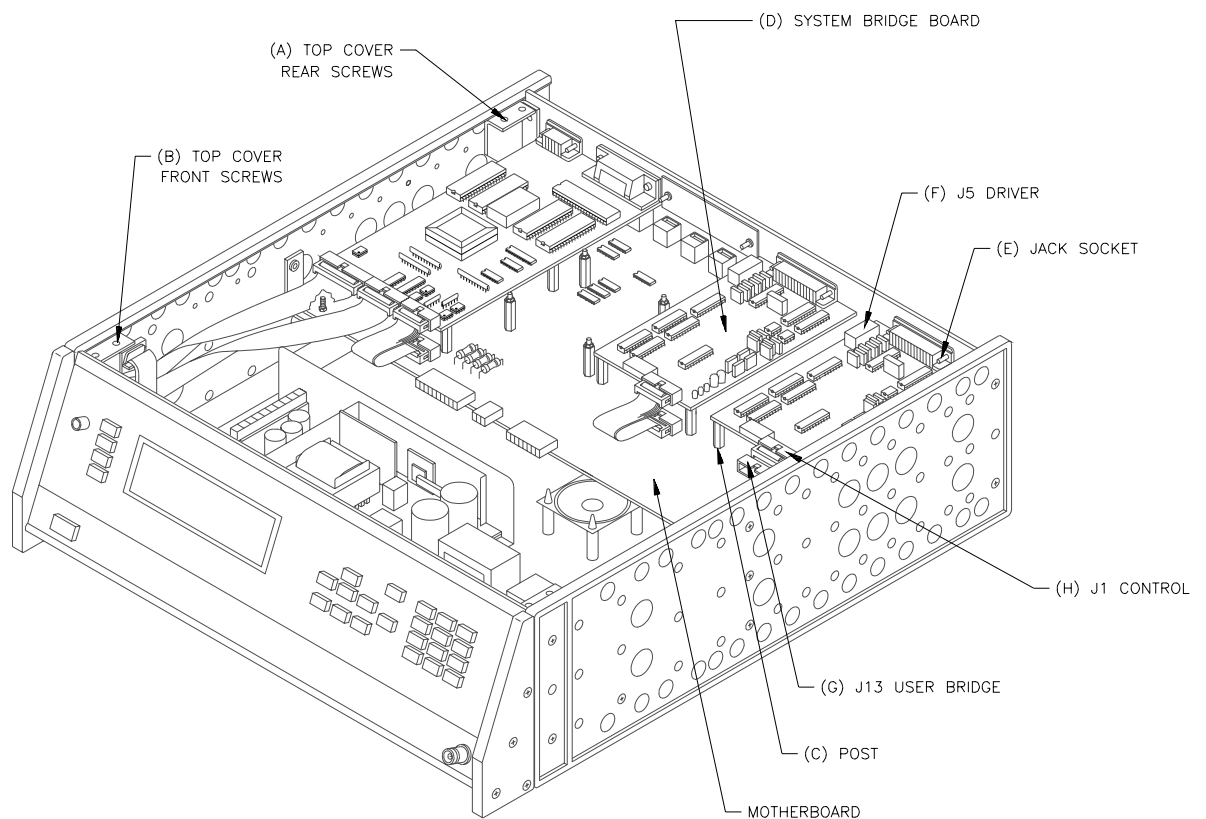


Figure A-1. Model 6000 PPMS Controller with Cover Removed

References

- Quantum Design. 1998. *Physical Property Measurement System: Hardware Manual*.
- . 1999. *Physical Property Measurement System: Helium-3 Refrigerator System User's Manual*.
- . 1998. *Physical Property Measurement System: Horizontal Rotator Option User's Manual*.
- . 1998. *Physical Property Measurement System: PPMS MultiVu Application User's Manual*.

Index

- AC mode
 - applying excitation current to sample, 2-6. *See also* User bridge board: Operation
 - as default drive mode, 2-6
 - recommended use of, 2-10, 2-11
 - synchronized with power line frequency, 2-7
 - as user bridge board parameter, 2-6, 2-8
- A/D converter, on user bridge board, calibrating, 2-7
- DC mode
 - applying excitation current to sample, 2-6. *See also* User bridge board: Operation
 - synchronized with power line frequency, 2-7
 - as user bridge board parameter, 2-6, 2-8
- Calibration modes, as user bridge board parameter, 2-4, 2-8. *See also* Fast mode; High-resolution mode; Standard mode
- Current limit, for user bridge board, 2-3, 2-8
- Drive modes, 2-6–2-7, 2-8
- Enhanced bridge board, 4-1
- Excitation current ranges, 2-4
- Fast mode
 - calculating sample resistance in, 2-4
 - suggested usage, 2-4
 - as user bridge board parameter, 2-4, 2-8
- Four-wire resistance measurements
 - advantage of, 1-2
 - extending temperature range of. *See* Helium-3 Refrigerator System option
 - rotating samples for. *See* Horizontal Rotator option
 - saving data from. *See* Resistivity data files
 - taking multiple
 - in immediate mode, 3-2, 3-6–3-7
 - in sequence mode, 3-2, 3-7–3-8
 - taking single point
 - in immediate mode, 3-2, 3-3–3-4
 - in sequence mode, 3-2, 3-4–3-5
 - user bridge board channels available for, 3-1, 3-2
 - wiring sample for. *See* Helium-3 sample mount; PPMS sample puck; Resistance bridge sample holder board; Resistivity sample puck
- Helium-3 refrigerator probe, proper handling of, 4-2
- Helium-3 Refrigerator System option
 - extending temperature range, 4-1, 4-4
 - and possible cross-talk, 4-4
 - reserving user bridge board channel 3, 4-1, 4-4
 - taking four-wire resistance measurements when installed, 4-2–4-4
 - user bridge board channels available with, 4-1
- Helium-3 sample mount, wiring sample to, 4-3
- High-resolution mode. *See also* Standard mode
 - calculating sample resistance in, 2-4, 2-5–2-6. *See also* User bridge board: Operation
 - suggested usage, 2-4
 - as user bridge board parameter, 2-4, 2-8
- Horizontal Rotator option
 - and function of UserTemp, 5-3
 - reserving user bridge board channel 1, 5-1
 - rotating samples, 5-1
 - taking four-wire resistance measurements when installed, 5-2–5-3
 - user bridge board channels available with, 5-1
- Horizontal Rotator probe, proper handling of, 5-2
- Measurements. *See* Four-wire resistance measurements
- Model 6000 PPMS Controller
 - changing user bridge board settings with, 2-11
 - connections for P1–User Bridge port, 2-2
 - housing user bridge board, 1-1, 2-1. *See also* User bridge board: Installing
 - illustration of, with cover removed, A-3
 - removing cover from, A-1–A-2
- Multiple resistance measurements, taking
 - in immediate mode, 3-2, 3-6–3-7
 - in sequence mode, 3-2, 3-7–3-8
- Nominal resolution, of user bridge board, determining, 2-3
- Power limit, for user bridge board, 2-3, 2-8
- PPMS measurement option, deactivating, 1-3
- PPMS MultiVu application
 - automating Resistivity operation, 1-2
 - commands changing user bridge board settings, 2-9
- PPMS sample puck
 - sample mounted on, illustration of, 1-2
 - using for four-wire resistance measurements, 1-1, 3-2
- qd_resistivity_temporary.dat file, 3-7

- Resistance bridge board. *See* System bridge board; User bridge board
- Resistance bridge sample holder board, wiring sample to, 5-2
- Resistivity command. *See* Single-point resistance measurement
- Resistivity control center
 - opening with Resistivity option activation, 1-3
 - simplifying system operation, 1-3, 3-2
- Resistivity data files
 - adding comment to, 3-11
 - changing during sequence run, 3-11
 - creating, 3-9–3-10
 - data stored in, 3-9
 - header in, and inability to change information written to, 3-2, 3-9, 3-10
 - opening graph view of, 3-4, 3-9
 - required for sequence measurements, 3-4, 3-7
 - saving immediate-mode data to, 3-4, 3-7
 - saving sequence mode data to, 3-4–3-5, 3-8, 3-9
 - selecting, 3-10
- Resistivity option
 - adding user bridge board to system, 1-1. *See also* User bridge board
 - electrical connections, 2-2
 - measurement types reported by, 1-1
 - operation with Helium-3 Refrigerator System. *See* Helium-3 Refrigerator System option
 - operation with Horizontal Rotator. *See* Horizontal Rotator option
 - sample pucks used with, 1-1. *See also* PPMS sample puck; Resistivity sample puck
- Resistivity option software. *See also* Resistivity control center; Resistivity data files
 - activating, 1-2–1-3
 - default data recorded by, 3-9
- Resistivity sample puck
 - interface, description of, 1-1, 3-1
 - as platform for up to three samples, 1-1, 3-1, 3-2
 - samples mounted on, illustration of, 3-1
 - wiring sample to, 1-1, 3-1–3-2
- Sample
 - and association with one user bridge board channel, 3-1, 3-2, 3-9
 - wiring for four-wire resistance measurement. *See* Helium-3 sample mount; PPMS sample puck; Resistance bridge sample holder board; Resistivity sample puck
- Sample resistance, estimating before measurement, 2-8, 3-2
- Scan Excitation command
 - in immediate mode, using, 3-6–3-7
 - in sequence mode, function of, 3-7
- Single-point resistance measurement, taking
 - in immediate mode, 3-2, 3-3–3-4
 - in sequence mode, 3-2, 3-4–3-5
- Standard mode. *See also* Fast mode
 - calculating sample resistance in, 2-4, 2-5. *See also* User bridge board: Operation
 - as default calibration mode, 2-4
 - suggested usage, 2-4
 - as user bridge board parameter, 2-4, 2-8
- Standard sample puck. *See* PPMS sample puck
- System bridge board, 2-1
- User bridge board
 - adjusting excitation current, 2-1, 2-3, 2-4, 2-11
 - block diagram, 2-3
 - calibration modes, 2-4, 2-8. *See also* Fast mode; High-resolution mode; Standard mode
 - channels. *See* User bridge board channels
 - drive modes, 2-6–2-7, 2-8
 - electrical connections, 2-2
 - enabling four-wire resistance measurements, 1-1, 2-1. *See also* Four-wire resistance measurements
 - installing, A-1–A-3
 - internal voltage gain control, 2-1, 2-7
 - location in Model 6000 PPMS Controller, illustration of, A-3
 - as main component of Resistivity option, 1-1, 2-1
 - operation, description of, 2-11–2-12. *See also* User bridge board channels: Changing settings
 - parameters
 - changing. *See* User bridge board channels: Changing settings
 - list of, 2-8. *See also* AC mode; DC mode; Fast mode; High-resolution mode; Standard mode
- User bridge board channels
 - changing settings for
 - in immediate mode, 2-8, 2-9–2-10
 - with Model 6000 PPMS Controller, 2-11
 - in sequence mode, 2-8, 2-9, 2-10–2-11
 - number of available, 1-1
 - parameters, list of, 2-8. *See also* AC mode; DC mode; Fast mode; High-resolution mode; Standard mode
- User bridge cable
 - illustration of, 4-2
 - used with Helium-3 Refrigerator System, 4-1, 4-2
 - used with Horizontal Rotator, 5-1, 5-2
- UserTemp, turning off, 5-3
- Voltage limit, for user bridge board, 2-3, 2-8
- Voltage gain settings, for user bridge board, 2-7